

ATTERBURY
TRUST

We Care

atterburytrust.org

We love to give because we care

Over a period of more than 27 years, Atterbury Trust has grown into a substantial non-profit aid organization with support and assistance from a large base of like-minded individuals and organisations who also love to give. This has given rise to a sizeable benefit platform from which to provide support to those members of our society who need it the most.

We support disadvantaged students and educational initiatives, provide donated agricultural products to the needy, make sure needy people receive medical care with dignity, assist with Afrikaans language music and performing arts endeavours, as well as provide for selected communities in need of care.

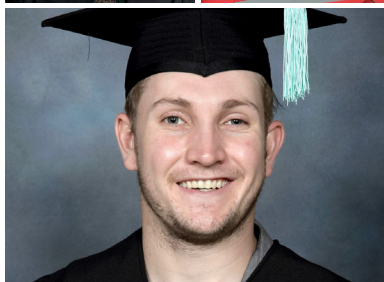
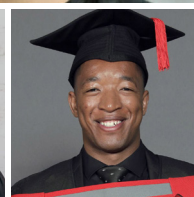
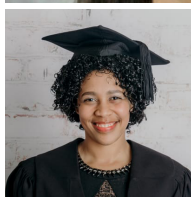
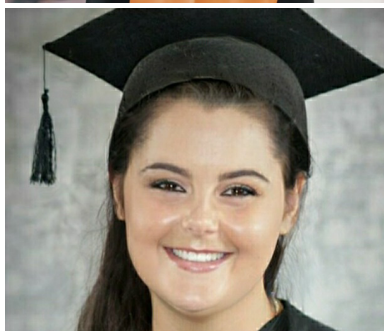
Atterbury Trust has gained significant experience over the years in managing responsible philanthropy. The trust has all the necessary systems in place for efficient general and financial management of aid organisations. Our professional team of experts also has the necessary relevant skills to effectively manage and maintain the social responsibility budgets of other organizations on their behalf.

Students and education

Atterbury Trust's innovative bursary loan schemes have given nearly 940 talented and needy young people the opportunity to further their studies. On average, there are around 170 tertiary students we support in this way each year.

Mentorship is just as important as financial aid to Atterbury Trust. That's why we build relationships with our supported students through individual mentorship sessions, workshops, networking events and job placement assistance.

The trust is also actively involved with several schools in disadvantaged areas. Regular support for scholastic projects and infrastructure improvements is provided. Additionally, school communities form part of our extensive network of benefactors, as philanthropy means so much more than just financial aid!



Atterbury Foundation NPC

Atterbury Foundation NPC was established in 2007 as a Level 1 B-BBEE certified non-profit organisation in partnership with Atterbury Trust. The foundation focuses on training, job creation and social upliftment, with education at its core. Scholarships for students, support for preschools and access to opportunities make a real impact.

The nationwide Startwell nutrition project to combat growth stunting, managed under the banner of Atterbury Foundation, already provides balanced daily meals to nearly 3 000 toddlers at 63 early childhood development centres, with support from WeBuyCars, OUTsurance and others. All contributions qualify for B-BBEE points.

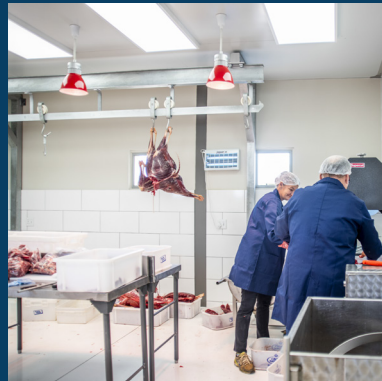


Terugploeg

SA's farming community also loves to give back. With the help of Terugploeg, donated agricultural products are distributed responsibly among organizations that support those in need.

However, this is not all. The job opportunities at Terugploeg's processing facility in Rayton, outside of Pretoria, provides a critical way of supporting people who need help in improving their own lives.

The innovative Terugploeg Boersaam initiative provides the public with an opportunity to donate cattle that are managed as commercial herds by participating farmers. As these herds expand through natural growth, a sustainable revenue stream can be assured.



Triomf Clinic

Atterbury Trust manages Triomf Clinic to provide medical care with dignity to this poor community. For the past 11 years, the people have trusted the clinic's team of volunteer doctors, medical personnel and other experts to provide the services they would struggle to afford by themselves.

A new chapter for Triomf Clinic begins in 2025 with its relocation to 41 Oaktree Avenue, Hazelwood, Pretoria. Situated alongside the prominent Club Surgical Centre, the clinic's new central location offers improved accessibility for patients and greater convenience for volunteer doctors.

We invite medical professionals to support Triomf Clinic by volunteering their time. The more medical experts who contribute, the more patients we can help.



TRIOMF
Uitnemende sorg met waardigheid

Fairtree Atterbury Theatre

The arts occupy a special place in our hearts at Atterbury Trust and we support musicians and performing artists in various ways, including through the management of Fairtree Atterbury Theatre, which provides a world-class theatre experience to the public.

Even during the restrictive Covid period, we made sure things went smoothly with innovations such as online concerts.

Things are going well at the theatre in Pretoria East, with full halls and a multitude of excellent performances to choose from.

Annually, the Atterbury National Piano Competition strives to find South Africa's most promising young pianists, thus filling a gap for young pianists to compete on a national stage.



ATTERBURY
THEATRE



A blend of benevolence

At the end of January when summer reaches its peak in the Cape, friends of Versnit gather on the lush green lawns of Rust en Vrede in Stellenbosch to enjoy a blend of the best Afrikaans music, wine and friendship.

Through Versnit, more than R20 million has already been raised to support the extensive benevolence activities of Atterbury Trust.

A special word of thanks to Versnit's premium sponsors Jean Engelbrecht, Toyota and Lexus, who annually make a significant contribution to the success of this unique fundraising initiative.



PRESENTED BY ATTERBURY TRUST



Impact numbers

There's nothing like quantitative numbers to articulate the impact of Atterbury Trust. Below are our most important highlights:

Students and education (1999 – 2025)

- 940 bursary loan students
- 680 qualifications completed
- 178 students in 2025

Terugploeg (2020 – 2025)

- More than 848-tonnes of agricultural products distributed
- 3,4 million meals prepared
- 109 organisations supported
- Cattle in Rustenburg, Bela Bela and Askham established via Boersaam
- Terugploeg building and meat processing plant completed
- Die Bosveld en Koffiebos

Triomf Clinic (2014 – 2025)

- 7 358 patients
- 206 Clinic days (2024)
- 18 doctors actively involved

Fairtree Atterbury Theatre (2011 – 2025)

- More than 4 000 shows
- 1 million audience members

Ad-hoc projects

- Various charitable projects since 2013 in cooperation with media partner GrootFM 90.5
- Student job opportunities: 2 746 opportunities created since 2023 and a total of R1.1 million paid out to students.
- Annual Atterbury National Piano Competition (since 2011)
- Atterbury Trust's Acapella University Singing Competition
- Project management of the infrastructure projects of Trust for Afrikaans Education at Afrikaans schools: 17 projects underway
- Survivors golf day – administrative and financial management
- Karoo Suite – educational opportunities for children from the Karoo in partnership with Coenie de Villiers and Deon Meyer
- Startwell Growth Impediment Project
- Leersaam: A reading project at primary schools
- MengNet: Networking opportunities for under-35s

We know you love to give too

As a charitable organization, we rely on the donations of people like you to enable the work we set out to do. Giving is part of our DNA at the Atterbury Trust because we care. If you want to help, feel free to donate online through our Donation Shop, because we know, like us, you love to give too.

atterburytrust.org/donasiewinkel

Bank details for donations

ATTERBURY TRUST IT 4555/98

FNB 63006546238

Branch code 252445

ATTERBURY FOUNDATION NPC 2007/006504/08

Nedbank 1497193788

Branch code 198765

An Article 18 A certificate will be issued to you for the tax benefits of your donation. B-BBEE Certification can be provided for donations to the Atterbury Property Foundation NPC

Contact us

Atterbury Trust Pretoria: 012 471 1600

Atterbury Trust Stellenbosch: 021 012 7330

Student bursary loans: studente@atterbury.co.za

Terugploeg: info@terugploeg.co.za

Triomf: info@triomf.org

MOI: jenene@atterbury.co.za

zapper™



**Nedbank Money
App Donations**



3292470822

Our people



Zahn Hulme

Executive trustee,
marketing and brand
management



Ananja Koen

Financial and
operational
management



Jana Wilbers

Finance



Bianca Rykaard

Student Coordinator



Surisa Schwalb

Atterbury Western
Cape finance and
projects



Danelle Strydom

Projects and
Marketing
Coordinator



Liauné Terblanche

Community
Coordinator



Leonie du Preez

GroLife life coach

Our trustees



Louis van Der Watt
Founder trustee:
Atterbury Trust
CEO: Atterbury Group



Zahn Hulme
Executive trustee,
marketing and brand
management



Armond Boshoff
CEO: Atterbury
South Africa



Lood Bester
Founder of
Terugploeg and
businessman



Johan du Preez
CEO: SAAD
Investment Holdings